

Ei le ei ki-itna sungah  
lungsim cidamna ding thupi hi.

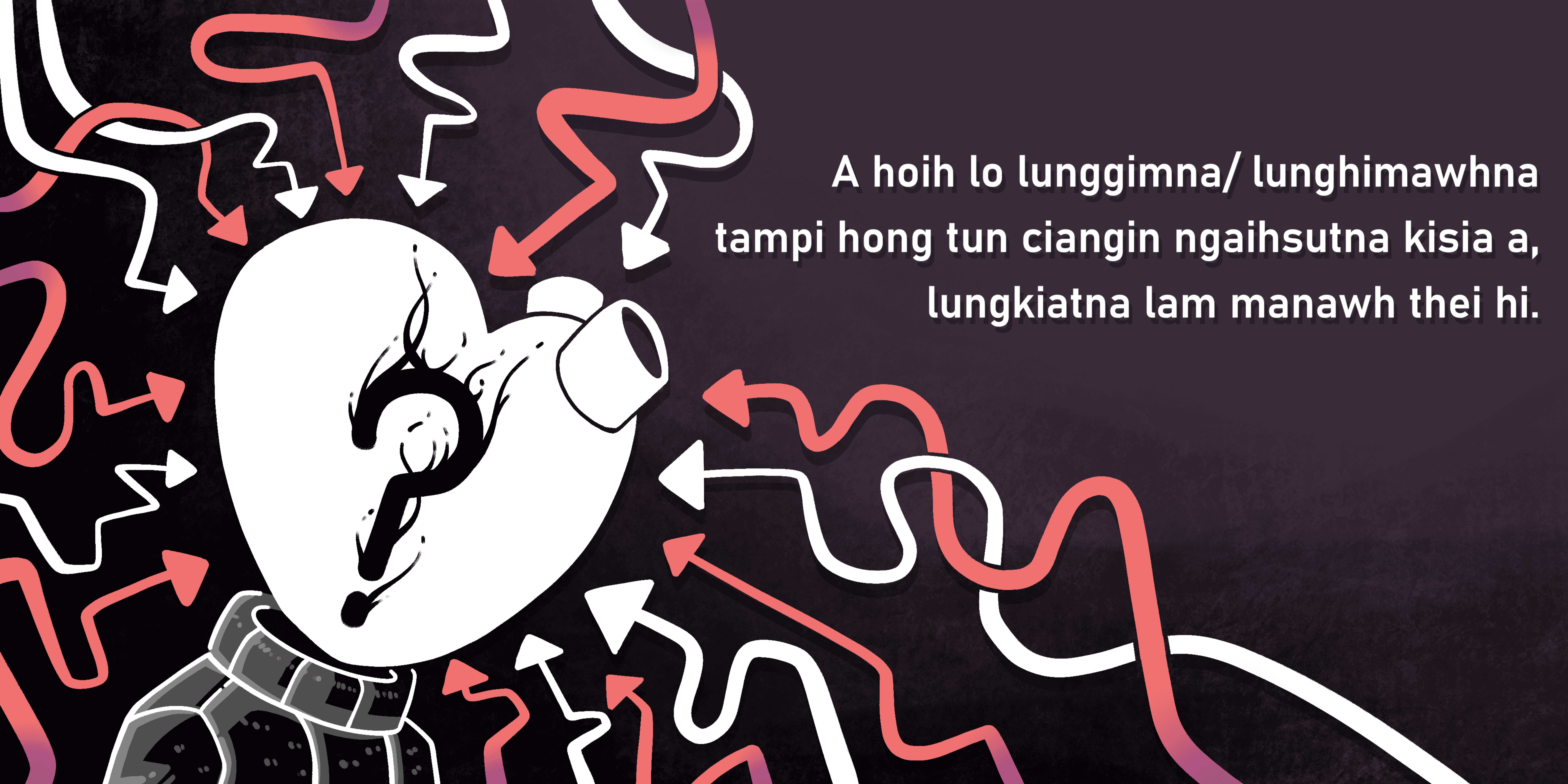


Nisim nuntakna sungah lungsim damna  
ding thuhoih aom mah bangin



Lungsim damna ding a hoihlo zong om hi.





A hoih lo lunggimna/ lunghimawhna  
tampi hong tun ciangin ngaihsutna kisia a,  
lungkiatna lam manawh thei hi.

A kibawl lo lungsim natnate hong nasiat semsem tak ciangin  
amah leh midangte lungsim natna ngahsak thei hi.



Mi khempuehin lungsim natna nei ciat uh-a,  
khat le khat a thuak zawhna uh kibang lo hi.



A thupi-in ah nang le nang kei bek hi'ng cih ngaihsut khak loh ding leh



Itnate hawmsawnin ih kihuh diamdiam ding ahi hi.



A lemlohna gen ding lem lel e.  
Ih vekpi-in khuavak banga a tang lametnate,  
itna leh kualna tawh kihawmsawn tek ding hihang!

